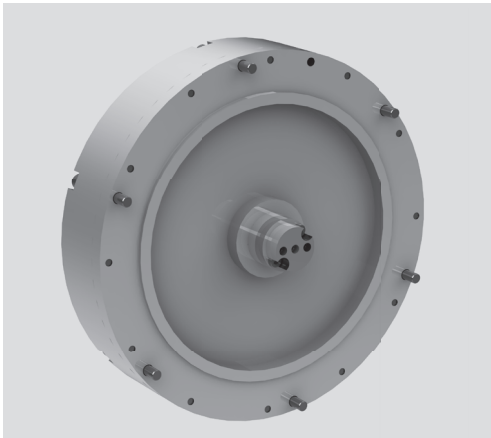


CPG

Pneumatic pancake cylinder for diaphragm chuck D-VARIO and face driver FDG

- Easy installation for grinding and turning machines without hydraulic unit
- Operating pressure 2-8 bar
- Medium feed for air / coolant

- Pneumatic actuation (2-8 bar)
- Easy installation for grinding and turning machines



Application/customer benefits

- For the actuation of diaphragm chuck D-VARIO and face driver FDG
- Easy installation for grinding and turning machines without hydraulic unit
- Compact design

Technical features

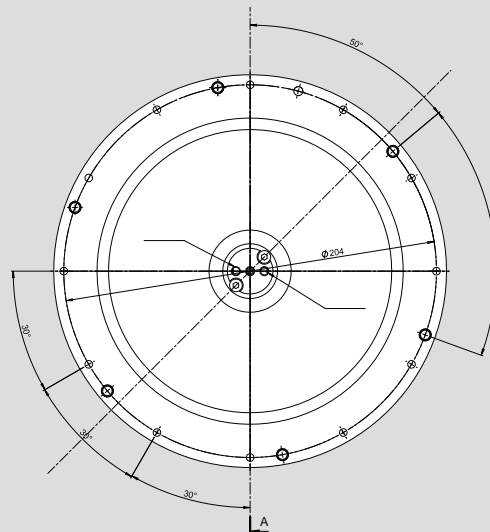
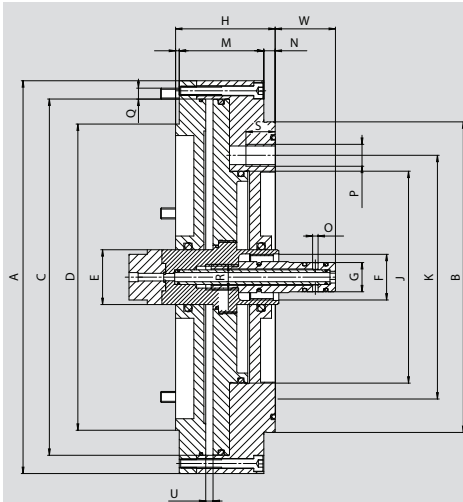
- Operating pressure 2-8 bar
- Maximum axial piston force push 21 kN and pull 7 kN
- 1 medium feed for air / coolant
- Air service unit with water separator and oil feed necessary
- Air feed tube necessary

Standard equipment

Pneumatic pancake cylinder
(without air feed tube)

Odering example

Version D-VARIO Id.No. 045863
Version FDG Id.No. 045891
APFL3 Id.No. 5302595



Accessory



APFL3 Air feed tube

- 3 Connections:
1x Actuation "push"
1x Actuation "pull"
1x Additional medium channel for air/coolant

Subject to technical changes.
For more detailed information please ask for customer drawing.

Id. No. 5302595

Technical Data

SMW-AUTOBLOK Type			CPG 215
	A	mm	215
	B	mm	170
	C	mm	195
	D	mm	167.6
	E	mm	30
	F	mm	M25x1.5
	G	mm	16
	H	mm	54.5
	J	mm	116
	K	mm	133.4
	L	mm	2
	M	mm	46.3
	N	mm	6.2
	O	mm	3
	P	mm	3x M12x120°
	Q	mm	M6
	R	mm	M14
	S	mm	16
Piston stroke	U	mm	4
Axial force 6 bar (pull)		kN	5
Axial force at 6 bar (push)		kN	16
Moment of inertia		kg·m ²	0.09
Max. speed		U/min	2.500
Piston area (piston pull)		cm ²	291
Piston area (piston push)		cm ²	98
Operating pressure		bar	2-8
Weight		kg	11.1