

High precision air chuck \varnothing 80 - 250 mm

AcuGrind

- with built-in pneumatic actuating cylinder
- fully sealed



Application/customers benefits

- Sealed standard chuck for high-precision turning and grinding
- Highest accuracy - runout and repeatability
- Built-in pneumatic actuation, no hydraulic cylinder required

Technical features

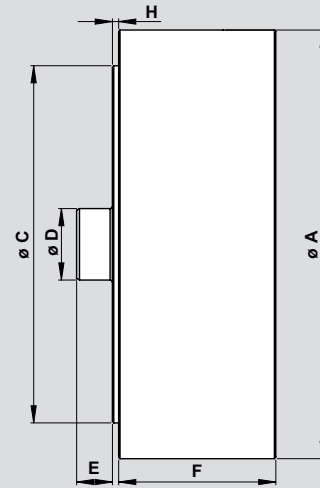
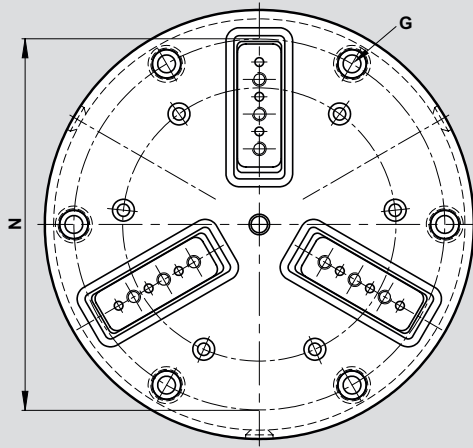
- Base jaws case hardened
- proofline - fully sealed - low maintenance
- Repeatability < 0.002 mm

Standard equipment

Power chuck
Boring ring for I.D. clamping
Boring ring for O.D. clamping
Lubricating oil

Ordering example

AcuGrind 150, Id.No. 5302503



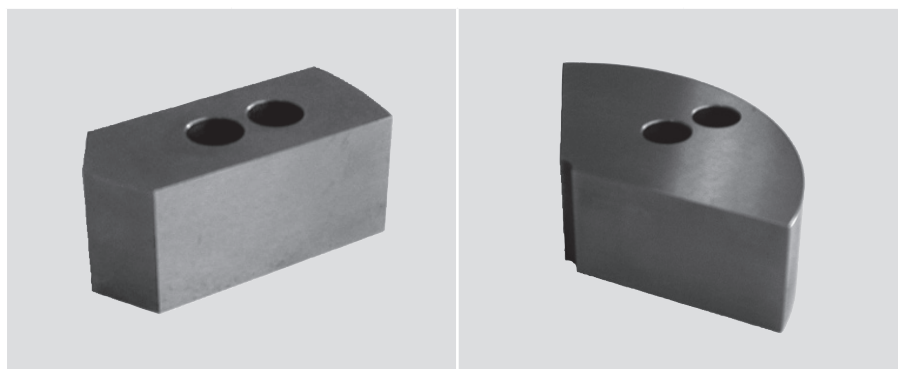
Subject to technical changes.
For more detailed information please ask for customer drawing.

Technical data

SMW-AUTOBLOK Type		AcuGrind 80	AcuGrind 100	AcuGrind 125	AcuGrind 150	AcuGrind 200	AcuGrind 250
Order number	Id.No.	5302500	5302501	5302502	5302503	5302504	5302505
Outside diameter	A	87	107	135	157	214	265
Centering diameter	C	60	82.55	114.3	125	167.6	215.8
Distributor \varnothing	D	20.7	20.7	20.7	20.7	20.7	20.7
Min / Max	E	8 / 16	8 / 16	8 / 16	8 / 16	8 / 16	8 / 16
Height	F	53.1	56.45	60	50.9	80.8	74
Jaw mounting bolts	G	6 x M5	6 x M5	6 x M6	6 x M6	6 x M10	6 x M10
	N	70	88.9	101.6	135.75	183	233.7
	H	2	2	1.8	2.2	6.8	7.2
Jaw stroke \varnothing	mm	2.5	2.5	2.5	2.5	2.5	2.5
Speed max. @ 6 bar	min ⁻¹	5000	4500	4500	4000	3000	2500
Clamping force @ 6 bar	kN	3.6	6.3	9.5	10.5	28	31
Operating pressure	bar	1-6	1-6	1-6	1-6	1-6	1-6
Weight	kg	2.5	3.5	6.5	7.5	21	28

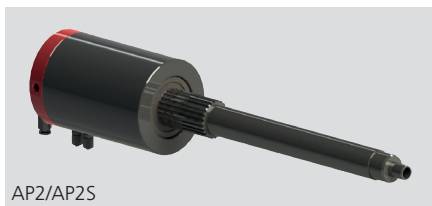
2-jaw and 4-jaw power chucks available on request

Top jaws for AcuGrind

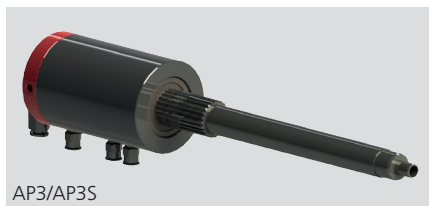


Chuck type	Material	WAK Soft top jaws		SBK Segment jaws 120°	
		Id.No.	Height	Id.No.	Height
AcuGrind 80	Aluminium	5302511	25	5302545	25
		5302512	38	5302546	38
	Steel	5302513	25	5302547	25
		5302514	38	5302548	38
AcuGrind 100	Aluminium	5302515	25	5302549	25
		5302516	38	5302550	50
	Steel	5302517	25	5302551	75
		5302518	38	5302552	100
	Steel	5302519	50	5302553	20
				5302554	38
	Steel			5302555	50
AcuGrind 125	Aluminium	5302520	25	5302556	25
		5302521	38	5302557	38
	Aluminium	5302522	50	5302558	50
		5302523	75	5302559	75
	Steel	5302524	25	5302560	20
		5302525	38	5302561	25
	Steel	5302526	50	5302562	38
				5302563	50
AcuGrind 150	Aluminium	5302527	25	5302564	25
		5302528	38	5302565	38
	Aluminium	5302529	50	5302566	50
		5302530	75	5302567	75
	Aluminium			5302568	100
	Steel	5302531	25	5302569	25
		5302532	38	5302570	38
	Steel	5302533	50	5302571	50
		5302534	75	5302572	75
AcuGrind 200	Aluminium	5302535	50	5302573	38
		5302536	75	5302574	50
	Aluminium	5302537	100	5302575	75
	Steel	5302538	50	5302576	50
		5302539	75	5302577	75
	Steel	5302540	100		
AcuGrind 250	Aluminium	5302541	50	5302578	75
		5302542	75	5302579	100
	Aluminium				
	Steel	5302543	50	5302580	50
		5302544	75	5302581	75

Air feed tubes fix (AP)



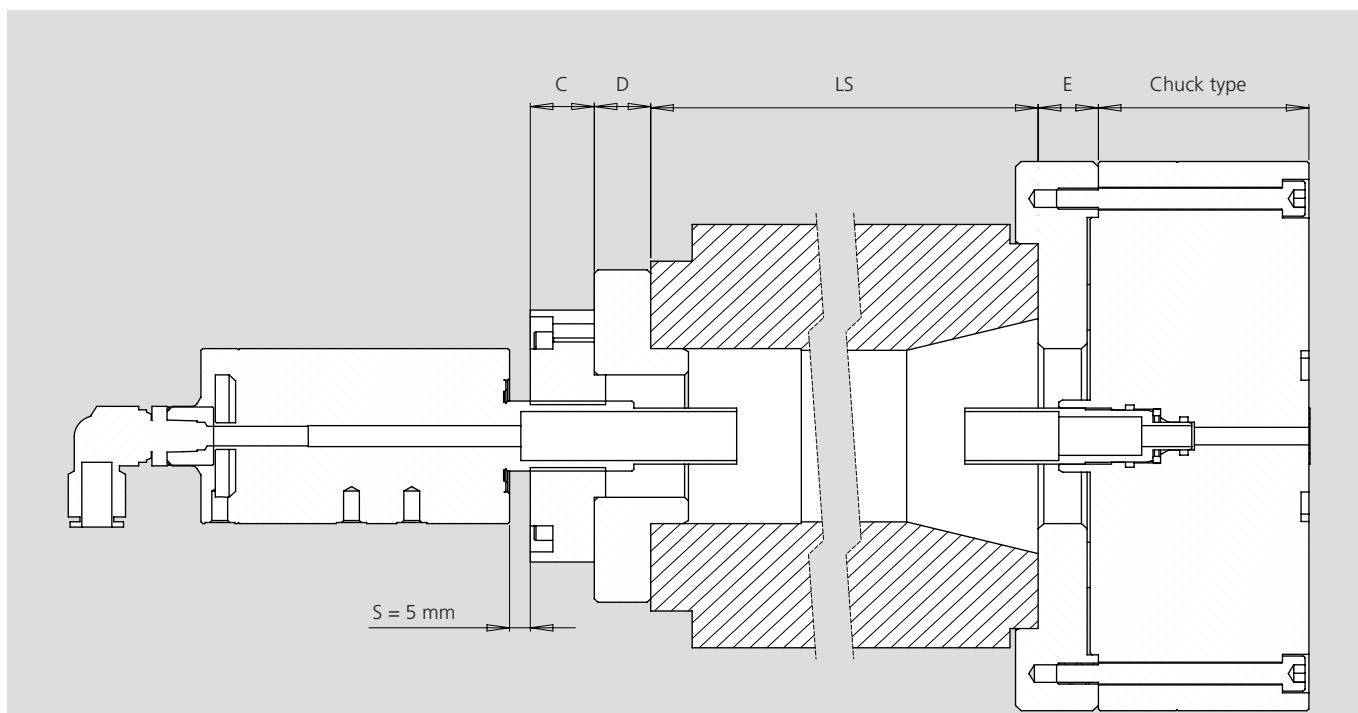
AP2/AP2S



AP3/AP3S

SMW-AUTOBLOK Typ	Id.No.	Speed max ¹	Version
AP2	5302590	5.000	2 airways
AP2S	5302591	5.000	2 airways
AP3	5302592	5.000	3 airways
AP3S	5302593	5.000	3 airways

AP2S/AP3S = with serration



LS	Spindle length
E	Chuck adaptor
C	Bushing (included in scope of delivery of the air feed tubes type AP)
D	Adaptor (mounting ring manufactured by the customer)
S	Safety distance
F	AcuGrind chuck

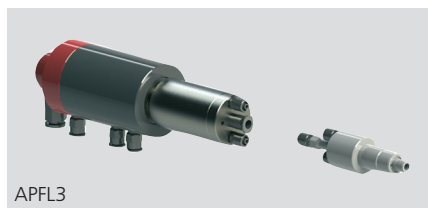
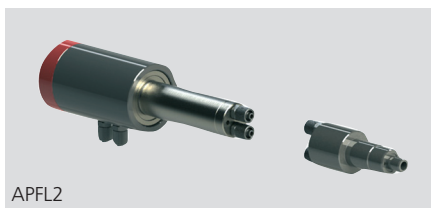
Ordering example

Note In case of an order of the air feed tubes type AP, the length of the air feed tube is necessary.

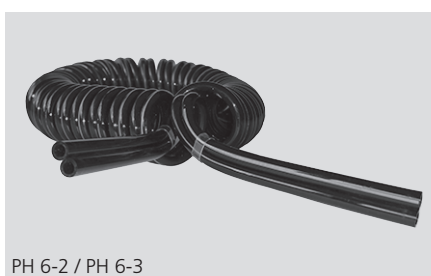
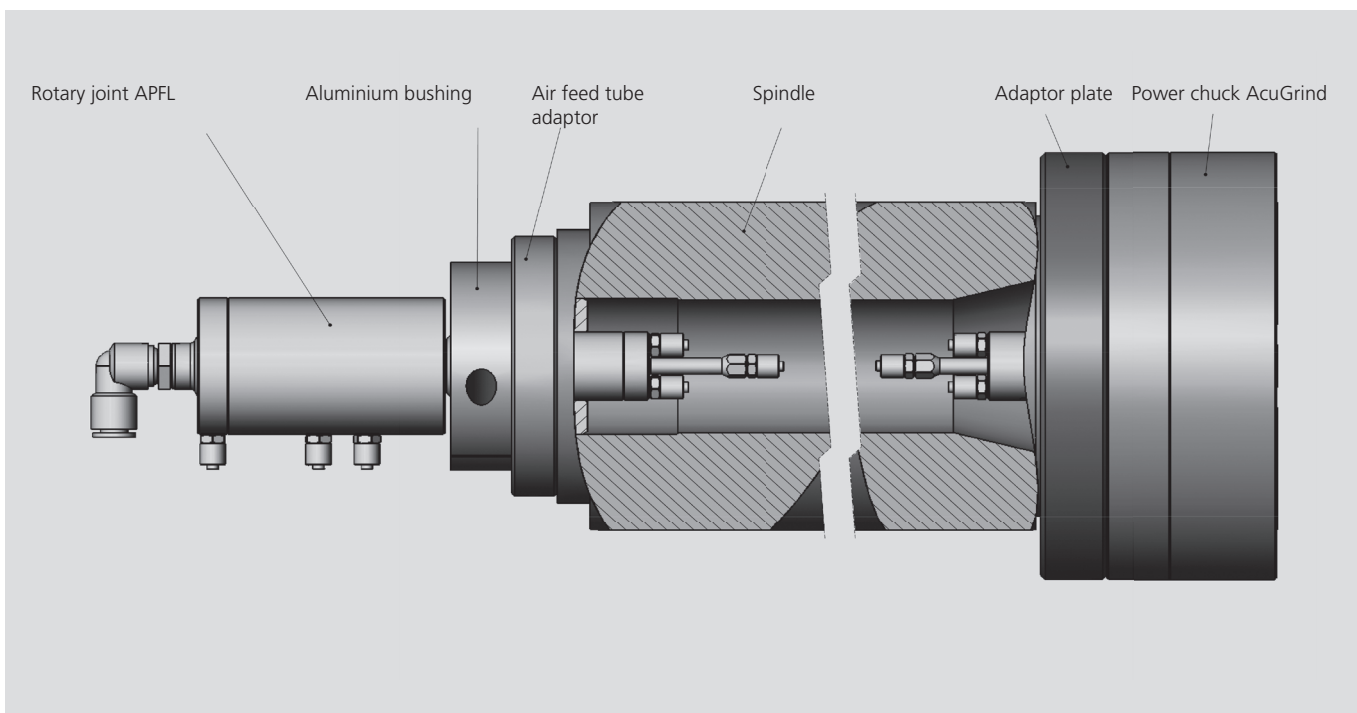
For calculating the correct length of the air feed tube (LR) are the following dimensions necessary: LS, E, C, D and the chuck type.

Note Use only with clean and oiled air.

Air feed tubes flex APFL



SMW-AUTOBLOK		Speed max ¹	Version
Type	Id. No.		
APFL2	5302594	6.000	2 airways
APFL3	5302595	6.000	3 airways



SMW-AUTOBLOK Type	Id.No.	PH 6-2 5302585	PH 6-3 5302586
Number of airways		2	3
Outside dia. Ø (mm)		6	6
Inside dia. Ø (mm)		4	4
Medium		air	air
Max. operating pressure at 20 °C		0.8 MPa	0.8 MPa
Operating temperature		-20 - +60 °C	-20 - +60 °C
Length (mm)		525	505
Max. working distance (mm)		1.500	1.000
Outside dia. Ø coil (mm)		37	37
Material		Polyurethan	Polyurethan
Colour		black	black